

Natural Vegetation

The world can be divided into zones of natural vegetation. Several categories of vegetation are mapped above.

Most of the categories can be subdivided. For example, there are several kinds of broadleaf trees: maples, oaks, birches, sycamores, cottonwoods, and so on.

Seven types of vegetation listed in the map key are shown here.



needleleaf trees



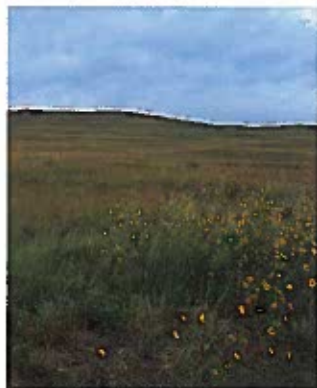
mixed trees



broadleaf trees



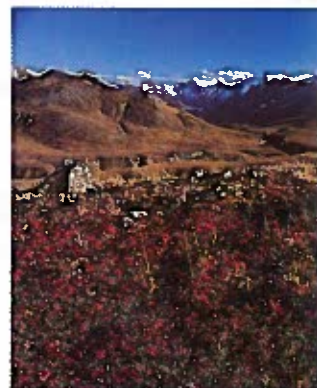
grass with trees



grass



shrubs



tundra and heath